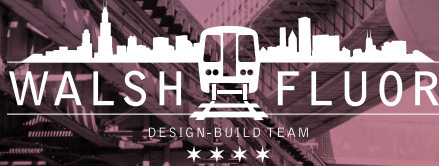


# CONSTRUCTION ROUNDUP

## WALSH-FLUOR'S MONTHLY NEWSLETTER

### JUNE 2021



### Message from Leadership



Welcome to the Walsh-Fluor (WF) monthly newsletter. We would like this newsletter to assist in communicating to the WF project team about project progress, introduce a few staff members in greater detail, and highlight some local establishments in the project area.

**We made it!**, and it feels good. I guess

I could be referring to starting LBMM Stage A or getting the COVID-19 vaccine. Both feel good.

Getting into LBMM Stage A has been an elusive step. I don't want to know how many different dates we had for this milestone. But we are there now, and now more self-perform work can begin. A shout-out must be made for the effort Josh Wyatt and Ryan Murray provided in getting the Pre-Stage Signal Systems commissioned. Their greatest skill set may be diplomacy.

No COVID-19 is not gone, but it sure feels different. Anyone feeling invincible? Thanks to everyone on the team who kept the RPM project moving in the past 14 months. We all experienced new challenges, mentally, at home, at work, and even how home and work are related. This project team did a tremendous job pushing through. Anyone even remotely involved with the project knows that to be true, and I cannot thank you enough.

My challenge to everyone on the team for June is to get out and see the work. Many new items of work will start in the next few months, DF track at RPB, special trackwork at Kenmore, and demolition and earth retention at LBMM to name a few. All of us should come away from this project with a good basic knowledge of all items of work we are performing. Make a call to your peers and schedule a tour of what this project team is doing.

- Dave Shier, Walsh-Fluor Project Executive

### PROJECT UPDATE



### LBMM: STAGE A COMMENCEMENT MILESTONE

➤ At 12:01am on Sunday, May 16, the Bryn Mawr and Argyle temporary stations opened as the LBMM area switched from four to two-track operations, officially marking the start of Stage A construction. With Red and Purple line trains now running on the western two tracks, WF can demolish and reconstruct the existing tracks and structure. Stage A will be complete in late 2022.

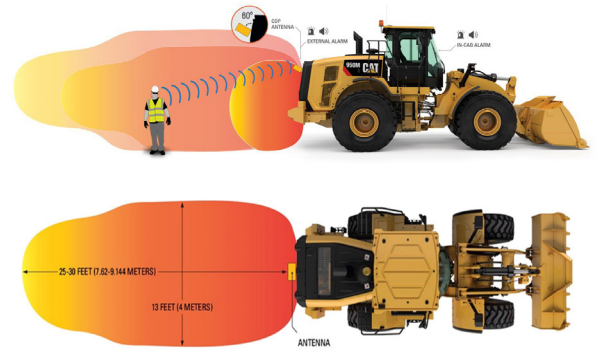


WF's Dave Shier, Sven Bosold, and Rob Cheeseman watched the Stage A cutover from the new Argyle temporary station platform (top). Alderman Harry Osterman of the 48<sup>th</sup> Ward and CTA RPM Project Executive Chris Bushell (bottom left) were among the first to ride the newly configured Red Line train service.



## SAFETY HIGHLIGHT

Over the past month, the WF safety group has been testing the Scan Link system on one of our loaders. This system is an additional safety measure and backup alarm that notifies an operator and a person walking in the path of the machine if they are getting too close to each other. With the Scan Link system, equipment and field staff (hardhats and vests) are tagged with radio frequency identification (RFID). If a person walks within range of the tagged equipment, an alarm is activated alerting the operator. Working within the tight confines of the RPM project, this technology might provide safety benefits to construction crews and field staff as work progresses.



## WELCOME TO THE TEAM

WF welcomed new staff to the project team this month – stop by and say hello when you have a chance



### JONTAY LEON, PRE-APPRENTICE

Jontay joined the WF team for the summer as part of the workforce development program through St. Sabina's Church. Jontay recently got into construction after working for several years in the food service industry.

Jontay will be spending eight weeks with the RPM team. So far, he has had a great experience. "I'm learning new things every day and I get to work with people who really love their jobs," he said.

Jontay hopes to get into the electrical or carpenters union in the future. In his free time, he enjoys landscaping and spending time with his two children, ages 9 and 3. He will also be getting married in September.



### KAYLA BALDWIN, INTERN

Kayla is a second-year student at University of Illinois at Urbana-Champaign, studying urban and regional planning with a concentration in public policy in law. She is interning on the RPM project,

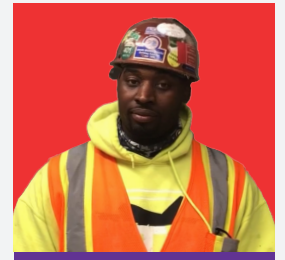
helping with public outreach efforts. Kayla also interned with Walsh last summer on the St. Barnabas School addition.

After graduating, Kayla hopes to work full-time as a practicing planner. In her free time, she enjoys DIY projects and she volunteers for various organizations, including My Block, My Hood, My City in Chicago and Health of the Homeless in Urbana.



## TRADESPERSON HIGHLIGHT

### Meet Pierre Starks, an Iron Worker Apprentice at RPB



Pierre is a Third-Year Iron Worker Apprentice working on the RPM Phase One project at the Red-Purple Bypass (RPB) site. Pierre is a native of Chicago who grew up in Englewood and attended Chicago Public Schools (CPS)'s Lindblom High School.

Pierre initially got into construction because he wanted to make money. As an apprentice, he is able to get paid while he learns, but he says you have to want it.

"You have to take the first step and no excuses whatsoever – you have to want to do it and you have to get it done."

Pierre recently shared his experience getting into the Iron Workers apprentice program with CPS students as part of WF's Tracks to Trades program, a six-part series that educates students on entry paths into the construction trades.



### LUCAS ROSSETTI, INTERN

Lucas is a student at the University of Wisconsin-Stout who is interning with the WF safety group. He has been assisting with safety walks, PPE counts and distribution, and performing daily site inspections. "My experience on RPM so far has been very welcoming," said Lucas. "Everyone is nice and willing to help if you have any questions."

Lucas is studying environmental science, with a concentration in health, and he hopes to pursue a career in either safety or industrial hygiene. In his free time, Lucas enjoys hanging out with his friends, watching the Cubs, and golfing.





## SMALL BUSINESS SPOTLIGHT

### The Dish on Next-Door-Neighbor Cookies and Carnitas

When WF moved into the office on Broadway, something delicious was cooking next door. Ducati-riding, globe-trotting Brad Newman and his business partner, mom-farmer-entrepreneur Christine Lee, are the owners of Cookies and Carnitas. The food is seriously good. No wonder. They met working in Charlie Trotter's kitchen.

Brad is a graduate of The Culinary Institute of America and has worked in kitchens all over the world, including one of the best, La Terraza del Casino in Madrid. Returning stateside, he took over as executive chef at the University of Chicago's Quadrangle Club where the Nobel laureate crowds like to dine. His next venture was selling sandwiches and cookies at the Lincoln Park Farmer's Market which eventually became Cookies and Carnitas.

Christine was searching for something new after 10 nonstop years as a corporate consultant. She started watching TV; in particular, Charlie Trotter's cooking show. She found what she was looking for. She persisted in calls and emails until Charlie finally called her back. He hired her to run his packaged-food business, which she did for eight years. She and her husband are farmers and the parents of a 9-year-old. Before all this, she spent two years in Turkmenistan with the Peace Corps.

Opening a restaurant is not for the faint-hearted. Especially in a pandemic. They have had their share of woes. They lost an investor and had supply chain challenges. "We're survivors, so we're going to survive," Brad said. "We buy good ingredients from good people."

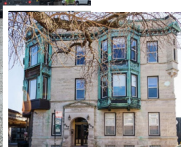
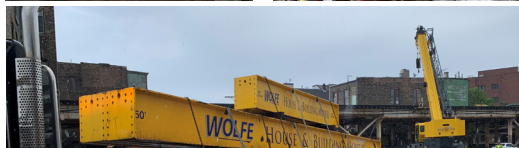
*Cookies and Carnitas is located at 5940 N. Broadway and is open Tuesday through Saturday, 7am to 9pm.*



Brad Newman (top) and Christine Lee (center) of Cookies and Carnitas recently catered the WF Stage A Topping Off Party.

## RPB CONSTRUCTION UPDATE

Rehabilitation work is progressing on the Ravenswood track structure as crews continue abating the lead and re-painting the Brown Line structure near Roscoe and Sheffield (top photos). Wolfe House & Building Movers mobilized equipment into the Vautravers lot this past month in preparation for the house relocation, which is scheduled for mid-August (bottom photos).



## DBE SPOTLIGHT: REA MASONRY

WF's subcontractor REA Masonry recently removed historic columns from the Bryn Mawr, Berwyn and Argyle stations. These columns will be preserved and incorporated into the new stations.

REA Masonry is a DBE-certified company founded by Richard Ates in 2016. Richard was a union brick layer for 20 years and previously worked for Walsh. Richard decided to start his own business and completed the construction management program at Kennedy-King College, as well as the CTA's Green Line Small Business Initiative. REA was awarded their first contract on the CTA's Garfield Gateway Station Renovation for Walsh. REA went on to perform work on the Cook County Hospital Redevelopment project, also for Walsh, and is continuing to grow with their involvement on the RPM Phase One project.

